

G7200ABT

嵌入式氣體煮食爐 | Built-in Gas Hob

使用說明書 | User Manual



目錄

一. 重要安全指示	03 - 04
二. 產品結構	04
三. 安裝說明	05
I. 房間內通風環境	05
II. 氣體接駁	05
III. 櫃面開孔尺寸	06
IV. 爐頭環，爐蓋及爐架之正確放置	07
四. 操作說明	08
五. 更換電池	08
六. 日常保養及注意事項	09
七. 產品規格	10
八. 常見故障及處理	11

一. 重要安全指示

多謝閣下選購本公司嵌入式氣體煮食爐。本說明書將指導用戶如何正確使用嵌入式氣體煮食爐[型號: G7200ABT (適用香港煤氣)] 及瞭解其結構性能特點、主要技術參數、安裝及拆除說明、操作步驟及調節方法、安全使用及注意事項、維護與保養、常見故障處理辦法等內容。這款氣體煮食爐是一件選料精良設計新穎的產品，配備高效環保節能爐頭、低氮氧化物燃燒器、意外熄火安全保護裝置、智能電子點火、定時熄火及安裝簡便等性能。所有爐具安裝與拆除、調校和維修服務必需由香港註冊氣體工程承辦商裝置技工來執行，否則一切後果本公司概不負責。如果您對嵌入式氣體煮食爐有任何查詢，請致電本公司客戶服務熱線37526111。

重要說明

產品使用前，請細閱本使用說明書，並妥善保存，以作將來參考之用。

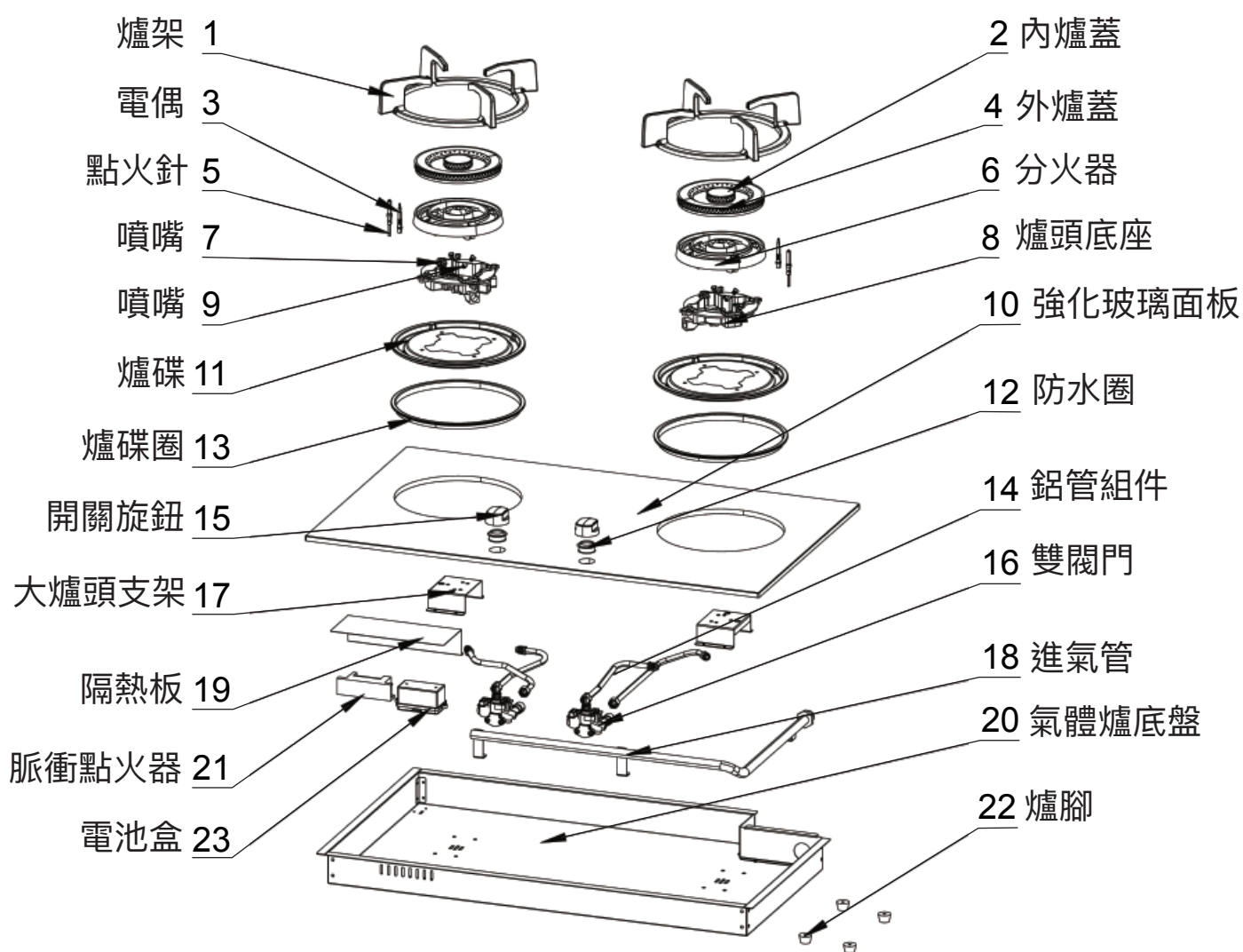
本產品只供一般家居使用，請小心細閱及根據本說明書的安裝及操作指示。

注意！

根據香港氣體安全規例，任何氣體裝置工程，包括爐具和接駁喉管的安裝，必須由香港註冊氣體工程承辦商裝置技工執行，而該技工已於相關的氣體工程類別註冊及受聘於註冊氣體工程承辦商。

- 1) 本產品必須由註冊氣體裝置技工安裝。
- 2) 請確保本產品使用範圍內通風良好，避免室內環境缺氧。
- 3) 當在灶櫃面安裝嵌入式氣體煮食爐時，請檢查櫃內是否提供適當的通風，以確保煮食爐在使用時操作常。
- 4) 切勿將易燃物料，噴霧及壓縮容器放置在灶櫃內。
- 5) 使用爐具時，必須將窗戶打開或啟動抽風設備(例如: 抽油煙機、抽氣扇，以確保室內空氣流通。
- 6) 當懷疑洩漏氣體時，即時將窗戶打開以便空氣流通，以及關閉煤氣錶閥及氣體燈警告。切勿操作任何電器或電掣開關如電燈。切勿在現場使用任何電話。在現場以外，致電註冊氣體承辦商或本公司客戶服務熱線3752 6111檢查。
- 7) 煮食爐使用後，應檢查所有旋轉開關旋轉至關閉位置“●”，以確保火種已熄滅。
- 8) 如爐火在使用過程中意外地熄滅，安全閥會自動切斷氣源。於一分鐘後，才可重新點火。
- 9) 使用煮食爐時，切勿使用噴霧劑或壓縮氣體，以免發生危險。
- 10) 點火後，請檢查爐火是否平穩及正常。拿走煮食器皿前，請先把爐火調細或關閉位置“●”。
- 11) 請勿放置任何物件(例如:吸熱墊)放置於爐架與煮食器皿之間，以避免對煮食爐造成嚴重損壞。
- 12) 請勿使用過大或過重的煮食器皿壓於爐架上，以避免對煮食爐造成損壞。
煮食器皿底部直徑必須在 400 毫米以下及重量不應超過 5 公斤。
- 13) 為避免傾倒煮食器皿，煮食器皿應平穩地放置在爐架中央位置。
- 14) 切勿讓兒童靠近煮食爐。
- 15) 請妥善保存購買發票及網上登記保養，這是本公司提供維修服務的重要依據。
- 16) 在使用前請仔細閱讀說明書內所作出對安裝及使用環境的安全說明。如不遵守說明書操作而出現問題，本公司將不負任何責任。

二. 產品結構



G7200ABT 嵌入式氣體煮食爐 (雙頭)

三. 安裝說明

重要說明

- 根據香港氣體安全條例，任何氣體裝置工程，包括爐具和接駁喉管的安裝，必須由香港註冊氣體裝置技工執行，而該技工已於相關的氣體工程類別註冊及受聘於香港註冊氣體工程承辦商。
- 爐具的進氣運作氣壓：香港煤氣1.5千帕 (kPa)。
- 安裝本產品前，應量度氣壓才能進行接駁。
- 如接駁的進氣運作氣壓與本產品所標示的不相符，將會嚴重影響本產品運作及導致損壞。
- 使用煮食爐時會產生熱氣及濕氣，所以廚房必須保持空氣流通。可開啟自然風窗口或安裝抽風裝置(例如：抽油煙機、抽氣扇)。長時間持續不斷的使用煮食爐，就必須要設置額外的通風設備(例如：手開窗戶)或使用有效的抽風裝置(例如：抽油煙機、抽氣扇)。
- 如要安裝煮食爐非易燃物料附近(如木板，木架等)，兩側須距離玻璃面最少60毫米(2.5英吋)以上，煮食爐的安裝位置應與周圍非易燃物料保持距離玻璃面最少60毫米以上。
- 煮食爐底部與其下面的平面預留至少100毫米(4英吋)的高度距離，以確保有足夠的通風。
- 本產品不需安裝外置氣體穩壓器。
- 切勿使用錫紙碟或非本公司所提供之輔助用具，因為使用錫紙碟可能令致爐火燃燒不正常。
- 煮食時切勿將爐頭火力調至火焰大於廚具器皿的外邊緣。
- 烹飪器皿的直徑：①煲具：120–280毫米(mm)；②鑊與平底鍋：160–400毫米(mm)。
- 爐頭承托重量：最大5公斤(kg)。
- 如需維修或更換零件，請與本公司維修部聯絡，並必須使用原廠配件。在保養期內，如因人為損壞、錯誤或不恰當使用爐具而導致之損壞，本公司會收取維修及零件費用。

I. 房間內通風環境

廚房內保持正常氣體燃燒及房間通道所需的空氣量，其體積必須不少於20立方米。空氣必須流通於房間內的窗戶或通風口。窗戶或通風口的面積必須最少為100平方厘米，並確保不被阻塞。在符合通風系統的有關法例之下，可接受從隔鄰房間抽取空氣的間接通風系統。

II 氣體接駁

注意：根據香港氣體安全條例，任何氣體裝置工程，包括爐具和接駁喉管的安裝，必須由註冊氣體裝置技工執行，而該技工必須已於相關的氣體工程類別註冊及受聘於註冊氣體工程承辦商。安裝前先查閱煮食爐的底部標籤上所列出的規格是否符合與安裝地點的氣體類別及操作壓力。氣體接駁必須符合有關法例。入氣咀的直徑為1/2吋。

使用認可印有機電工程署批准標記(例如：機電工程署批准 EMSD APPROVAL GTXXXX) 的氣體接駁喉管以連接爐具，或使用機電工程署接納的其他恰當方法。

#備註：機電工程署

三. 安裝說明

使用煤氣之接駁喉管不能長於180cm，喉管不得觸及爐體，亦不得從爐具底部穿過，以免喉管受熱，容易發生意外。用橡膠泥條粘貼在底殼周邊下的表面上。

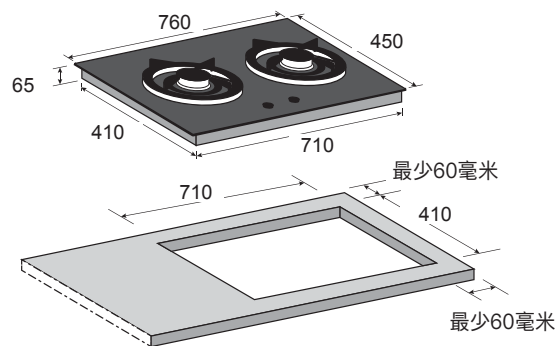
III. 櫃面開孔尺寸

在安裝煮食爐的廚櫃枱上按照【圖一】尺寸開設安裝孔。

注意：

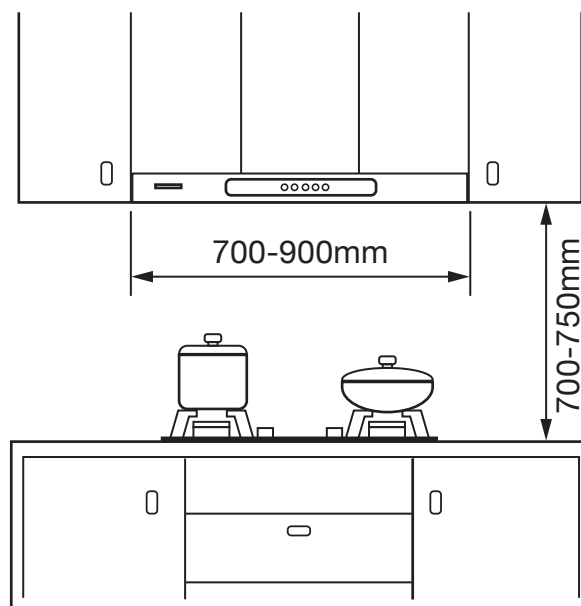
1. 煮食爐底盤下需預留最少100毫米高度距離 及
2. * 由玻璃面至牆身最少預留60毫米的空間距離。

安裝孔的尺寸(單位/毫米):(闊) 710 x (深) 410 **(Model: G7200ABT)**



【圖一】 Model: G7200ABT

3. 爐具上方宜安裝700–900mm闊的抽油煙機，且頂部應留有700–750mm以上的空間【圖二】。



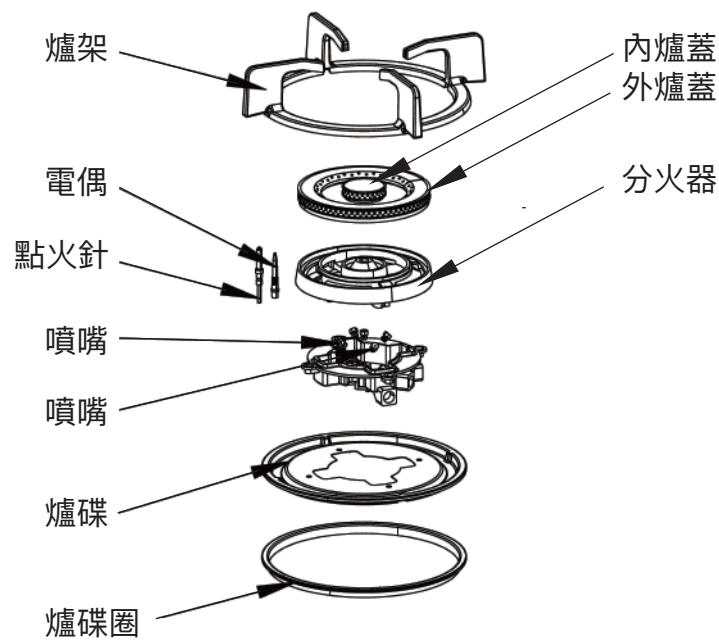
【圖二】

三. 安裝說明

IV、內爐頭環、外爐頭環及爐架之正確放置

在內爐頭環、外爐頭環及爐架不正確地放置的情況下，可能會引起燃燒不良，爐頭環/玻璃面板損壞或其他意外。

- 1) 將爐頭配件正確地放置，如【圖三】。
- 2) 爐頭環必須正確放置，切勿傾斜如【圖四】。
- 3) 爐架按爐碟上對應的凹凸位置擺放，以確保爐架擺放在正確的位置。





【圖三】 Model: G7200ABT

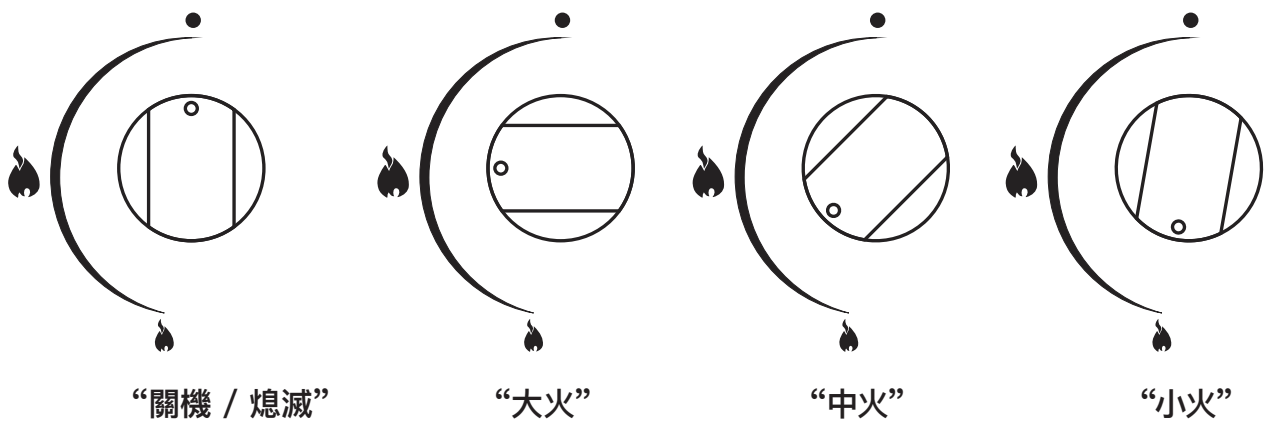


【圖四】 Model: G7200ABT

四. 操作說明 / 五. 更換電池

四. 操作說明

- 1) 向下按壓煮食爐開關旋鈕並同時向逆時針方向(“”的位置)慢慢地旋轉，隨著「咻咻」的聲響，火花將點燃燃燒器。在確認燃燒器被點燃後(數秒內)，請保持原有位置按下數秒後才可放手。若燃燒器未被點燃時而中途放手，可能會未能點火。
- 2) 將手放開煮食爐開關旋鈕而發現爐火仍未點著時，請用以上的點燃方法再次操作。點火後，切記將手慢慢地放開。
- 3) 轉動煮食爐開關旋鈕，調節爐火至所需火力。爐火大小可於“●”及“”之間的位置調節。請緩慢轉動開關旋鈕以調節火力【圖五】。



【圖五】

- 4) 如爐火熄滅，防漏熄火安全裝置會自動切斷燃氣供應，如出現有此情況，請將煮食爐開關旋鈕轉至“●”的位置。
- 5) 將煮食爐開關旋鈕轉至“●”的位置，爐火便會熄滅。

五. 更換電池

如遇點火(咻咻)聲音變得低沉或頻率變慢，可能是電池沒有電。此情況需要更換電池。
在更換電池的過程中，請把電池的“+”、“-”(正極、負極)接駁至電池盒的正確位置。

六. 日常保養注意事項

進行任何清潔工作時，必須將爐具切斷閥關閉，並須待爐具及所有配件冷卻後才可進行。

清潔嵌入式氣體煮食爐

1. 定期以沾有中性洗滌劑和溫水的半濕海綿、抹布等清潔爐頭、爐架及爐碟，並用乾布拭乾。
2. 煮食時滾瀉的食物或液體必須以乾抹布清潔。
3. 一般情況下，不應接觸氣體煮食爐內部，若有需要進行清潔，應穿上保護手套，避免割傷。經常檢查氣體軟喉，如發現有裂紋，請致電註冊氣體承辦商為閣下更換。

清潔玻璃面板

1. 切勿使用利器如螺絲起子及研磨粉以防止刮花玻璃面和印刷圖案。
2. 用乾淨柔軟沾有溫和清潔劑的濕布抹面板。

清潔爐頭

1. 當爐頭蓋噴孔被污物阻塞時，將爐頭蓋取出，以中性洗滌劑和溫水清理，並妥善放回爐頭座上。
2. 使用非金屬刷子及溫和清潔劑清理爐頭蓋。
3. 漂白劑、強鹼性洗滌劑、去污粉等，會導致爐頭蓋表面塗層損毀，不可使用。
4. 清洗完畢後，用乾布將爐頭蓋完全抹乾，爐頭蓋的噴孔內，不可留水份，以免影響燃燒。
5. 將爐頭蓋正確地放回原位，爐頭蓋的定位針是對準爐頭座的凹位，爐頭蓋不可傾側。

清潔搪瓷及金屬配件

1. 請定期以中性洗滌劑和溫水清潔配件以保其表面塗層。
2. 切勿使用研磨粉，以免刮花配件表面。
3. 請勿殘留任何酸性或鹼性物質於配件上（例如：醋、檸檬汁、鹽及蕃茄醬）。

七. 產品規格

產品型號	G7200ABT
產品名稱	嵌入式氣體煮食爐 (雙頭)
產品尺寸	760 (W) x 450 (D) x 65 (H) mm
開孔尺寸	710 (W) x 410 (D) mm
額定熱負荷	5200W (左) + 5200W (右)
電源供應	1.5伏特D 型鹼性電池
點火方式	自動電子點火
氣體種類	香港煤氣
氣體接駁方式	1/2" B.S.P (公頭)
氣體壓力	1500 Pa
安全裝置	有
面板物料	強化玻璃
瓷化玻璃顏色	黑色
產地	中國
重量	10.6 kg

八. 常見故障及處理

問題	可能原因	解決方式
爐頭點不著火	1. 點火器潮濕 (尤其在潮濕季節) 2. 氣體來源開關已關閉 3. 電池已耗盡 4. 電池未裝好 5. 點火針油垢多 6. (熱)電偶油垢多 7. 點火針位置不當 8. 爐頭火蓋或燃燒器擺位不正 9. 爐頭火蓋的焰孔有污物 10. 點火針或點火器損壞 11. (熱)電偶或電子磁吸損壞	1. 用紙巾或乾布抹乾點火器 2. 檢查及打開氣體來源開關 3. 更換電池 4. 檢查電池的“正極”和“負極”是否安裝正確 5. 清潔點火針油垢 6. 清潔熱電偶油垢 7. 通知爐具供應商安排註冊氣體裝置技工維修或檢查 8. 重新擺置爐頭火蓋或燃燒器 9. 清潔爐頭火蓋焰孔內之污物 10. 通知爐具供應商安排註冊氣體裝置技工維修或檢查 11. 通知爐具供應商安排註冊氣體裝置技工維修或檢查
爐頭沒有火焰	已關閉燃氣表控制閥及/或爐具切斷閥	完全開啟燃氣表控制閥及/或爐具切斷閥
爐頭不能保持火焰	不正確轉動開關旋鈕	向下按壓開關旋鈕並同時轉至“  ”位置，期間會聽到“啪啪”聲。在爐火點燃後，按住幾秒後才可以放手。
發現有氣體異味	1. 喉管破裂或未完成接駁 2. 閥體漏氣	1. 聯絡爐具供應商或註冊氣體裝置技工檢查，更換或重新接駁喉管。 2. 聯絡爐具供應商或註冊氣體裝置技工更換閥體。
紅火	空氣濕度大，油煙大	此乃正常現象
黃火或點火	爐頭積聚油漬及污垢	以暖水和稀釋中性清潔劑清洗爐頭，然後抹乾並安裝至正確位置。
離焰/脫火	廚房空氣流動太快，抽風過猛。	適當關小門窗，油煙機打開弱檔。
回火	1. 燃氣壓力過低 2. 爐頭火蓋的焰孔有滾瀉食物及汁液 3. 燃燒時間過長，導致爐頭溫度過高	1. 通知爐具供應商安排註冊氣體裝置技工維修或檢查 2. 清潔爐頭火蓋 3. 暫停使用，待冷卻後再用
火焰短小	燃氣壓力低	通知爐具供應商安排註冊氣體裝置技工維修或檢查
火焰易熄	熱電偶偏離火焰	通知爐具供應商安排註冊氣體裝置技工維修或檢查
火焰不穩定	爐頭未正確裝置	重新裝置爐頭
其他原因	其他故障	通知爐具供應商安排註冊氣體裝置技工維修或檢查

警告： 如按以上方法仍無法點火，請即致電爐具供應商作維修服務。切勿使用其他方法點火。

Table of Contents

A. Important Safety Instructions	13 - 14
B. Product Structure	15
C. Installation Instructions	16
I. Room Ventilation	17
II. Gas Connection	17
III. Cut-out Dimensions	18
IV. Correct Position of Burning Ring, Burner Cap and Trivet	19
D. Operating Instructions	20
E. Replacing Battery	20
F. Daily Maintenance	21
G. Product Specification	22
H. Trouble Shooting	23

A. Important Safety Instructions

Thank you for your purchase of our built-in gas hob. The instruction manual is to direct users how to operate (Available for HK Towngas) built-in gas hob model no: G7200ABT and its main contents include structure, performance features, specifications, operation steps, safety use and cautions, cleaning, installation and dismantling, maintenance and trouble shooting and handling, etc. The gas hob uses high-quality materials and is made with a streamlined and new design. Equipped with high power energy saving and low nitrogen-oxygen compound burner, flame failure safety devices, intelligent igniter system, timer and easy assembly installation. All installation and dismantling, adjustment and repair service should be executed by a registered gas installer (RGI) in Hong Kong, Otherwise, our company is exempt from all responsibility.

Our Customer Service will be glad to help you any queries concerning the gas hob or should you require more information and service, please contact our service hotline at 3752 6111.

Important

Read the user manual carefully before using the product and save it for future reference use. This product is designed for domestic use only. Please read the installation and operating instructions carefully.

Attention!

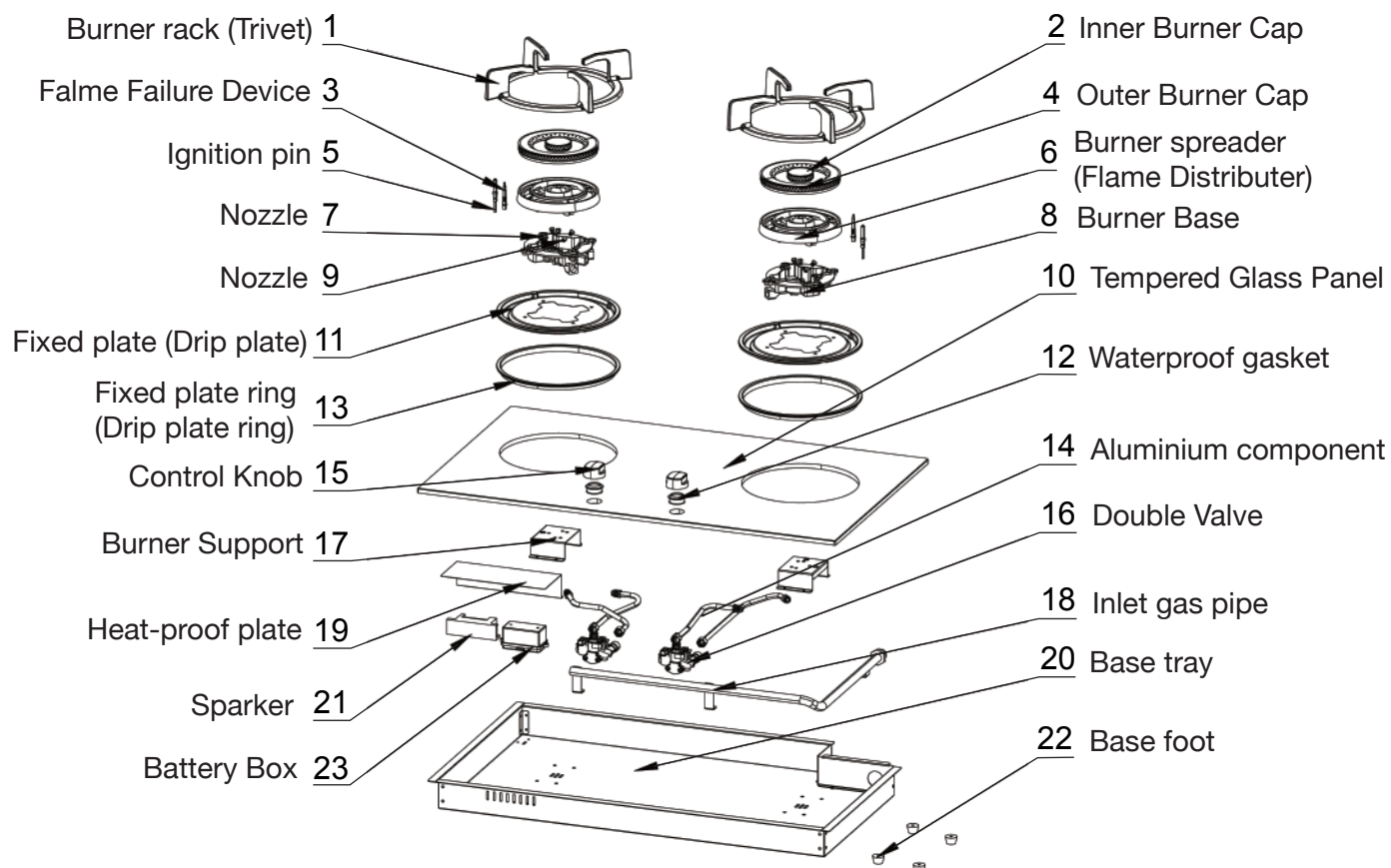
According to the Gas Safety Ordinance of Hong Kong, any gas installation works including the installation of appliances and connection tubing, must be undertaken by registered gas installers (RGI) in Hong Kong who are registered for that appropriate classes and are employed by a registered gas contractor.

- 1) This built-in gas hob must be installed by registered gas installers.
- 2) Ensure that this built-in gas hob is used in a good ventilation environment.
An Environment with insufficient oxygen should be avoided.
- 3) When installing this built-in gas hob on top of the stove cabinet, please check that there is a provision of suitable ventilation at the cabinet to ensure proper operation of the gas hob.
- 4) Do not place any inflammable materials, sprays or pressurised containers inside the kitchen cabinets.
- 5) Ensure a good ventilation environment by opening windows or using a range hood or exhaust fan.
- 6) In case of a suspected gas leak, open windows and shut off the gas meter valve. Do not operate any electric appliances or switches. Do not use any phones on site. Contact the registered gas contractor or our Customer Service Hotline on 3752 6111 with a phone outside the premises.

A. Warning and Safety Precautions

- 7) Ensure that all control knobs are set to “●” position after use.
- 8) If the flame is blown out during the gas hob when operating, the safety valve will cut off the gas supply. Ignite again at least after one minute.
- 9) Do not use spray or compressed gas when the gas hobs are operating in order to avoid a hazard.
- 10) After ignition, check for the flame if it is even and normal. Before removing the utensil from the built-in gas hob, turn the control knob to a small flame or “●” position.
- 11) Do not place any object (e.g. hot mat) between the trivet and the utensil in order to avoid serious damage to the built-in gas hob.
- 12) Do not use an over-size or over-weight utensils. Or it will cause damage to the gas hob. The bottom diameter of the utensil is less than 400 mm and the weight is not over 5 kg.
- 13) Do not tilt the utensil. Place the utensils in the middle steadily on the trivet.
- 14) Keep children away from the gas hob.
- 15) Keep the original invoice for online registration and future reference for service.
- 16) Please read the instruction carefully, the information contained in these instructions is essential for the correct operation and installation of the gas hob. For your safety, our company is exempt from all responsibility if the requirements of this manual are not complied with.

B. Product Structure



G7200ABT Built-in Gas Hob

C. Installation Instructions

Important

- In accordance with the Gas Safety Ordinance of Hong Kong, any gas installation works including the installation of appliances and connecting tubes must be undertaken by Hong Kong RGI registered gas installers who are registered for the appropriate classes and are employed by registered gas contractors.
- The inlet gas supply working pressure to the gas hob must be 1.5 kPa (HK Towngas).
- Pressure must be accurately measured before connecting the built-in gas hob.
- If gas supply with non-compatible pressure is connected to the built-in gas hob. It will affect the performance and/or pose a risk of damage to the built-in gas hob.
- It is essential to ensure that the kitchen is well ventilated since the use of a gas hob will produce heat and moisture. Keep windows opened and/or install a ventilation device (e.g. range hood, exhaust fan). Prolonged or intensive use of the gas hob will require additional ventilation. For example, opening wider windows or increasing the operating level of ventilation devices (e.g. range hood, exhaust fan).
- If the built-in gas hob is required to install close to combustible surroundings (such as wooden walls, or wooden shelves), it should be installed at least 60mm (approx. 2.5 inches) from the glass edges to the side walls.
- If the built-in gas hob is required to install close to incombustible surroundings (such as wooden walls, or wooden shelves), it should be installed at least 60mm (approx. 2.5 inch) from the glass edges to the side walls.
- In order to keep a good ventilation condition, there should be at least 100mm (approx. 4 inch.) distance from the base bottom of the built-in gas hob.
- An external gas governor is not required for the gas hob.
- Do not use aluminium cover and other additional fittings. Using an aluminium cover may cause abnormal combustion.
- Do not set the flames spread out of the edge to pots, pans, etc.
- Diameter of the cookware: Pots : 120-280 mm ; Woks and pans : 160-400 mm

The burner supporting weight : Max. 5Kg.

Please contact our service department for repair and parts replacement. The parts must be used originally supplied by the distributor. During the warranty, our company will reserve the right to charge spare parts and service fees if the damage is caused by misuse or improper installation.

C. Installation Instructions

I. Room Ventilation

The kitchen should be well-ventilated and with an amount of no less than 20m³ air volume for regular gas combustion. The key is air must naturally flow through a permanent opening in the room. The openings must vent the fumes outdoors and those openings must be at least 100cm² and should never be blocked. In strict compliance with any local regulation in force, it is permitted that indirect ventilation by air is drawn from an adjacent room.

II. Gas Connection

Important:

According to the Gas Safety Ordinance of Hong Kong, any gas installation works including the installation of appliances and connection tubing, must be undertaken by registered gas installers (RGI) who are registered for that appropriate classes and be employed by registered gas contractors.

Before connecting the appliances, make sure that the type of gas and working pressure are correspond to the specifications on the data label affixed to the underside of the gas hob. The gas connection must comply with the pertinent standards and provisions in force. The size of the gas inlet is 1/2 inch.

Use approved gas tubing bearing **EMSD approval mark** (e.g. **EMSD APPROVAL GTXXXX**) for connection to appliances, or other appropriate methods accepted by EMSD.

Note: EMSD stands for Electrical and Mechanical Services Department (HK)

The gas tube shall be no longer than 180cm and kept away from the gas hob and do not cross through the bottom of the gas hob in order to avoid accidents,
After connecting the gas tube, stick on the lower rim of the bottom shell glass with the rubber mud.

C. Installation Instructions

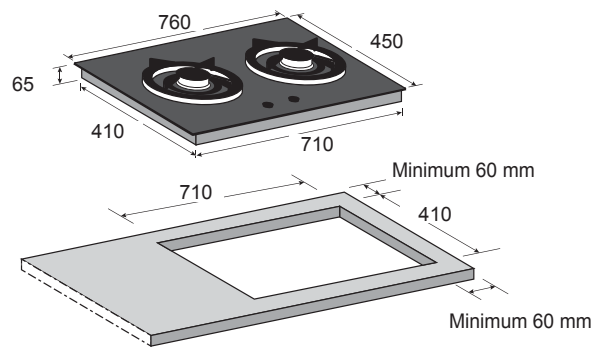
III. Cut-out Dimensions

Open an installation hole on the worktop of cabinet as per **[Fig. 1]**.

Note:

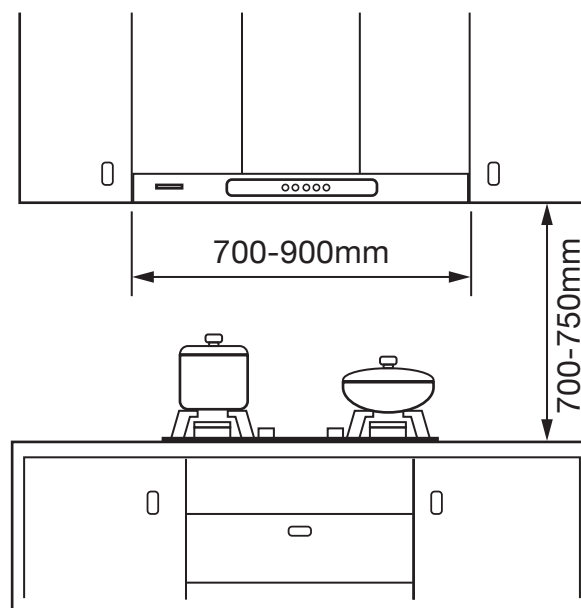
1. The height under the base tray shall reserve more than 100mm and
2. Minimum clearance 60mm from gas edges of hob to wall.

Cut out dimension (unit/mm): (W) 710 x (D) 410 **(Model: G7200ABT)**



[Fig. 1] Model: G7200ABT

3. Range hood with width of 700-900mm shall be installed on the top of the gas hob and keep a space of over 700-750mm on top of it **[Fig. 2]**.



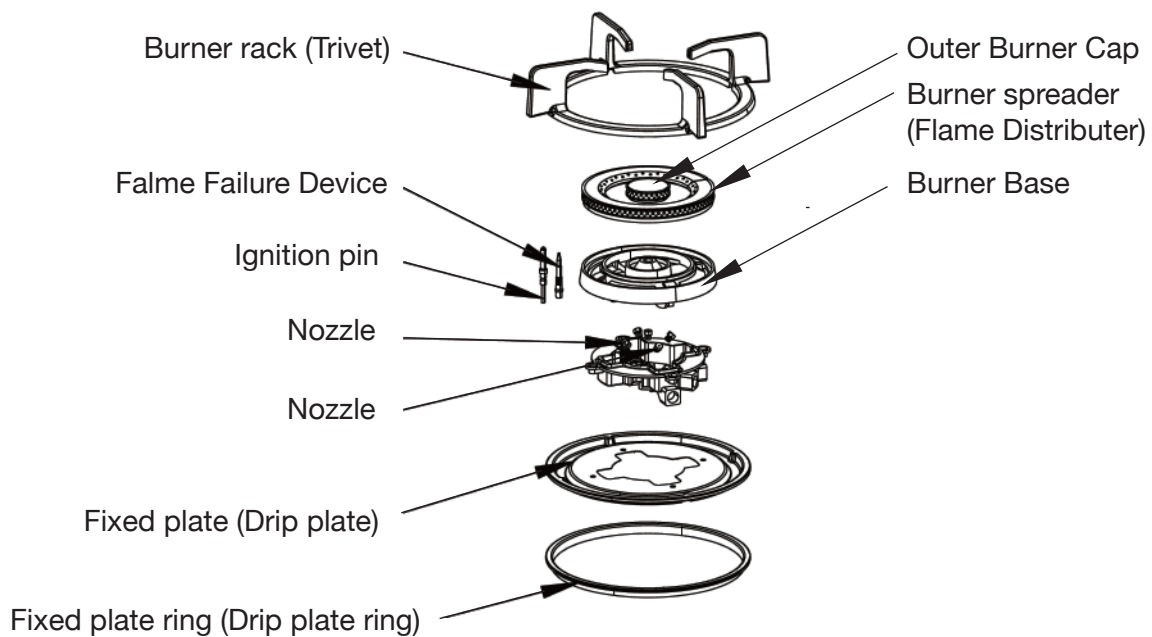
[Fig. 2]

C. Installation Instructions

IV. Correct Position of Burner Ring, Burner Cap and Trivet

Incorrect position of burner ring, cap and trivet will affect the flame performance and cause damage of burner ring and glass panel or other accidents.

- 1) Assemble all components correctly as **[Fig. 3]**.
- 2) Fit the burner ring and burner cap properly with no gap. Do not fit it improperly as **[Fig. 4]**.
- 3) Put the trivet onto the drip plate correctly and the embossed features on the drip plate is used to guide the fitting for the trivet.






[Fig. 3] Model: G7200ABT

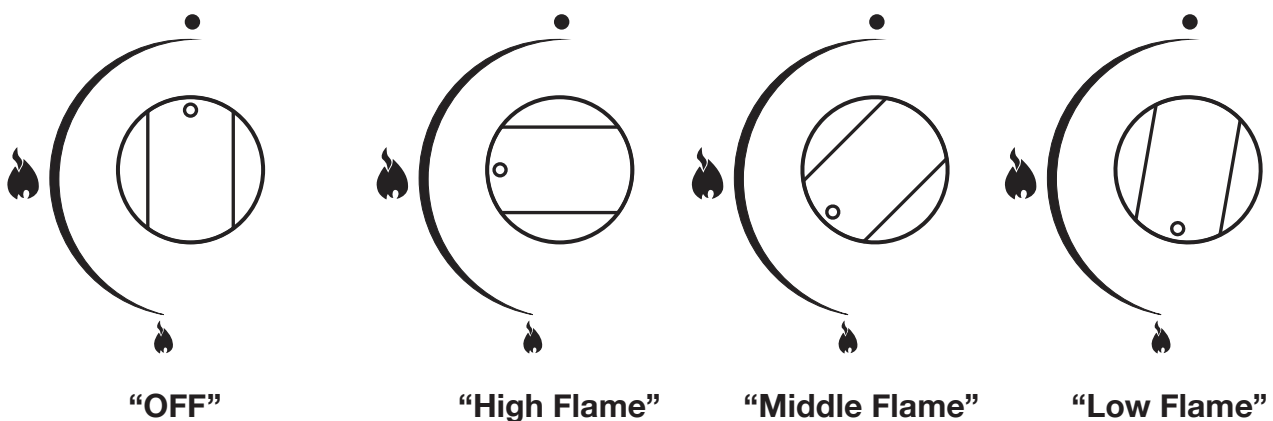


[Fig. 4] Model: G7200ABT



D. Operating Instructions / E. Replacing Battery

D. Operating Instructions

- 1) While pushing the control knob, turn it anti-clockwise slowly (towards the “” position) until you hear a “**CLICK**” sound. An electronic spark will ignite burners. Keep pushing the control knob for several seconds, the safety device will then operate. If you release your hand halfway, an electronic spark will not ignite burners.
- 2) If the flame goes out when you release your hand, repeat the ignition procedure again but try releasing your hand slowly.
- 3) Turn the control knob to adjust the flame to desirable settings. Flame can be adjusted between “” and “”. Please adjust the flame slowly [Fig. 5].



[Fig. 5]

- 4) If the flame is extinguished while using, the safety device will shut the gas off. When this appears, please turn the control knob to “” position.
- 5) Turn the control knob to “” position, the flame will extinguish.

E. Replacing Battery

When the sound generated from the ignition spark becomes deep or slows down in this situation, the battery may be out of order. Please replace the battery.

Remind to set the battery to correct polarity (“ + ” and “ - ”).

F. Daily Maintenance

Before cleaning the appliance, it should be completely close the gas meter valve and / or appliance isolation valve. Allow the appliance to cool down before performing any maintenance and cleaning.

Cleaning Built-in Gas Hob

1. Regularly use any neutral cleaning agent and semi-wet sponge or cloth to clean the burner, pan support and drip pan. Then use a dry cloth to wipe it.
2. Any spilled food or liquid during cooking must always be removed using a dry rag.
3. Do not touch any internal parts of the gas hob. If necessary, wear gloves to prevent from cut injury if it is required to clean the interior of appliance.

Cleaning Glass Top Plate

1. Do not use sharp tool like screwdriver and abrasive powder in order to prevent scratch to glass surface and printing.
2. Wipe the top plate with a clean, soft, damp cloth with mild detergent.

Cleaning Burner

1. Remove burner cap for cleaning when ports of burner cap are blocked by dirt using neutral detergent and warm water, and then place it back on burner base properly.
2. Use non-metallic brush and mild detergent to clean burner cap.
3. Do not use any bleaching agents, strong alkali detergent or cleaning powder. Otherwise, the coating of the burner cap will be damaged.
4. Dry burner cap completely with dry cloth after washing. Ports of burner cap must be free from water lest combustion is affected.
5. Replace burner cap properly that fixing pin of burner cap aligns with indent of burner base. Burner cap must not be tilted.


Cleaning Enameled Parts or Metallic Parts

1. Regularly use neutral cleaning agent and warm water to clean for protecting the surface coating.
2. Do not use any abrasive powder that can scratch the surface.
3. Do not leave any acidic or alkaline substances on the enameled parts (such as : vinegar, lemon juice, salt, tomato sauce)

G. Product Specification

Model	G7200ABT
Product Name	Built-in Gas Hob
Dimension	760 (W) x 450 (D) x 65 (H) mm
Cut-out Size	710 (W) x 410 (D) mm
Heat Input	5200W (left) +5200W (right) (gas)
Power	1.5 V D-size alkaline battery
Ignition Method	Electronic ignition
Gas Type	Town Gas
Gas Connection	1/2" B.S.P (Male)
Gas Pressure	1500 Pa
Safety Device	Yes
Panel Material	Tempered Glass
Colour	Black
Origin	PRC
Weight	10.6 kg

H. Trouble Shooting

Situation	Reason	Solution
Flame cannot be ignited	1) Ignition pin is wet, especially in the humid season 2) Main gas valves are closed 3) The battery is used up 4) Battery is not installed properly in right position 5) Greasy dirt on ignition pin 6) Greasy dirt on thermocouple 7) Misplacement of ignition needle 8) Burner cap or spreader is placed incorrectly 9) Greasy dirt in the gas passage on the burner cap 10) Ignition pin or igniter has been damaged 11) The thermocouple or electrovalve has damaged	1) Dry the Ignition pin with a clean tissue or dry cloth 2) Open the main gas valve 3) Replace the battery 4) Re-install battery at correct polarity (“+” and “-”) 5) Clean greasy dirt on the ignition pin. 6) Clean greasy dirt on thermocouple 7) To contact the supplier to arrange registered gas installers for repair or inspection. 8) Placed them again correctly. 9) To clean and tidy up the burner cap 10) To contact the supplier to arrange registered gas installers for repair or inspection 11) To contact the supplier to arrange registered gas installers for repair or inspection
No main flame	Gas meter cock and/or appliance isolating cock have been closed	Open gas meter cock and/or appliance isolating cock completely
Flame cannot be held	Incorrect turning of the control knob	Push down and turn the control knob anti-clockwise towards for a few seconds “  ” until the “CLICK” sound is heard. Release only after the flame is set.
Smell of Gas	1) Gas pipe is damaged or not connected properly 2) Gas valve is leaking	1) Contact the sole agent or registered gas installer (RGI) to check, replace or re-connect the gas pipe 2) Contact the sole agent or a registered gas installer replace the gas valve.
Red flame	High air humidity or too much oil fume	This is a common phenomenon.
Yellow or small flame	Grease and dirt accumulated on the burner cap (or burner ring)	Wash burner cap (or burner ring) in warm water with mild detergent. Dry the burner cap with a clean cloth and place it back in the correct position on the gas hob.
Lift flame	Too rapid airflow in the kitchen or too strong range hood	To close doors and windows or to turn on the range hood in lower speed
Returned fire	1) Too low gas pressure 2) Spillage of food and liquid into the gas passage on the burner cap 3) The burners in high temperature after a long burning time.	1) To contact the supplier to arrange registered gas installers for repair or inspection 2) To clean and tidy up the burner cap 3) To temporarily stop using it and try again after it cooled down.
Short and small flame	Gas pressure low	To contact the supplier to arrange registered gas installers for repair or inspection
Easily flameout	The thermocouple is deflected from flame	To contact the supplier to arrange registered gas installers for repair or inspection
Unstable flame	The burner cap and burner ring are not installed properly	Re-install the burner cap and burner ring properly
Other problems	Other malfunctions	To contact the supplier to arrange registered gas installers for repair or inspection.

Warning: If the gas hob cannot be ignited by the above-suggested solution, do not attempt to ignite it by other means. Please contact the sole agent for repairing.