

V29VNTG

嵌入式氣體煮食爐 | Built-in Gas Hob

安裝說明書 | Installation Manual



## Table of Contents

---

A. Warning and Safety Precautions	03 - 04
B. Product Structure	05
C. Installation Instructions	06
I. Room Ventilation	07
II. Gas Connection	07
III. Cut-out Dimensions	08
IV. Correct Position of Burning Ring, Burner Cap and Trivet	09
D. Operating Instruction	10
E. Replacing Battery	10
F. Daily Maintenance and Precaution	11
G. Product Specification	12
Warranty Terms and Conditions	23

## A. Warning and Safety Precautions

---

Thank you for your purchasing in our product. The instruction manual is to direct users how to operate of (Available for HK Towngas) built-in gas hob and its main contents include structure, performance features, specifications, operation steps, safety use and cautions, cleaning, installation and dismantling , maintenance and trouble shooting, etc. The gas hob use high quality materials, and is made with a streamlined design. Equipped with high power energy saving and low nitrogen-oxygen compound burner , flame failure safety device, intelligent igniter system, timer and easy assembly installation. All installation and dismantling , adjustment and repair service should be executed by registered gas installer (RGI) in Hong Kong, Otherwise our company is exempt from all responsibility.

Our Customer Service will be glad to help you for any queries concerning the product or should you require more information and service.

### **Important**

Read the user manual carefully before using the product and save it for future reference use.

This product is designed for domestic use only. Please read the installation and operating instruction carefully and use the built-in hob according to the user manual.

### **Attention!**

According to the Gas Safety Ordinance of Hong Kong, any gas installation works including the installation of appliances and connection tubing, must be undertaken by registered gas installers (RGI) who are registered for that appropriate classes and are employed by registered gas contractor.

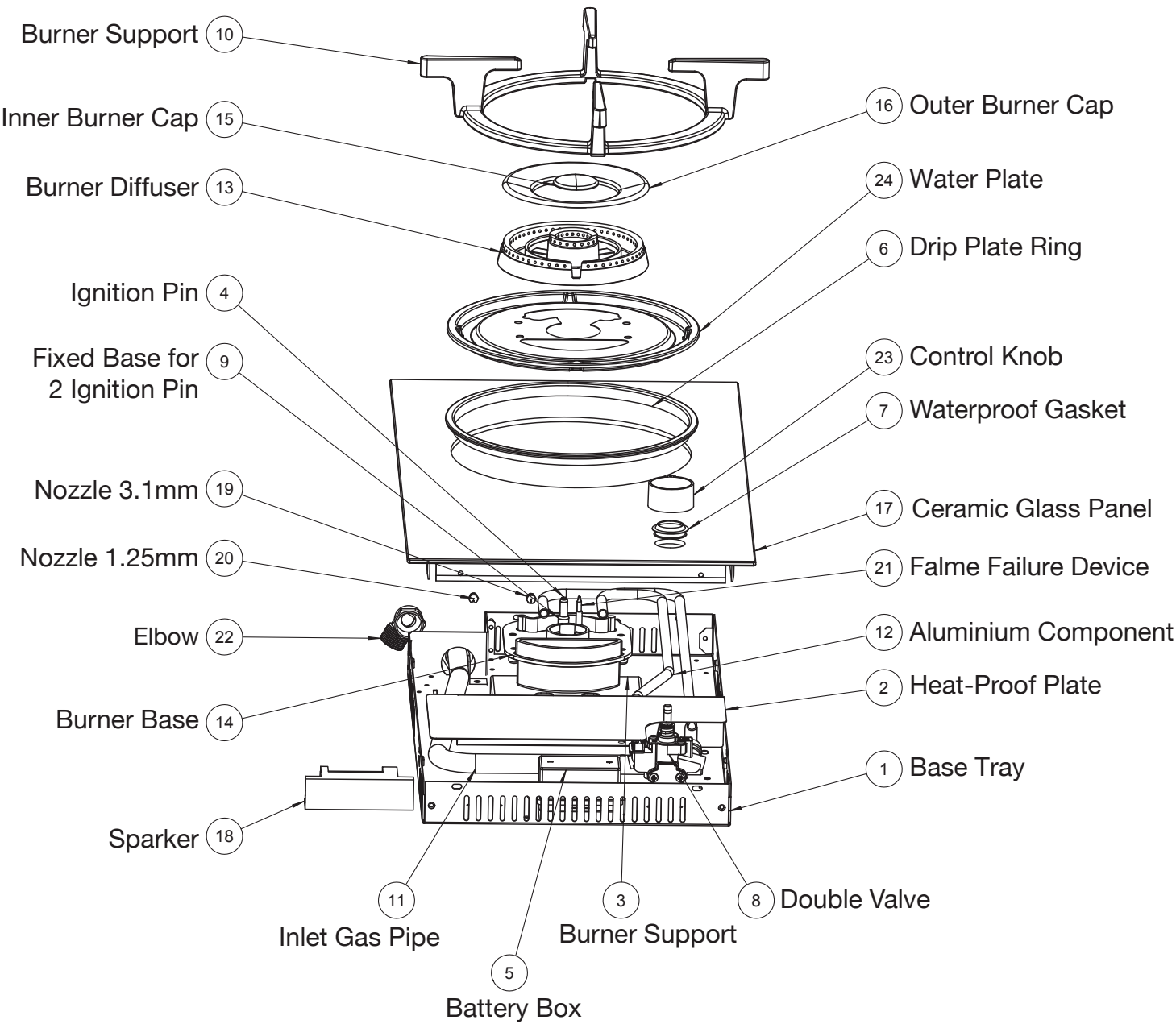
- 1) This built-in gas hob must be installed by registered gas installers.
- 2) Ensure that this built-in gas hob is used in good ventilation environment. Environment with insufficient oxygen should be avoided.
- 3) When installing this built-in gas hob on top of stove cabinet, please check that there is provision of suitable ventilation at the cabinet to ensure proper operation of the gas hob.
- 4) Do not place any inflammable materials, sprays or pressurised containers inside the stove cabinets.
- 5) During long period of use, ensure a good ventilation environment by opening windows or using range hood or exhaust fan.
- 6) In case of gas leakage, turn off the gas hob and the gas main valve. Ventilate the room immediately by opening window and contact the sole agent to send registered gas installers (RGI) for inspection. Caution: Do not turn on or turn off any power supply (or lights).

## A. Warning and Safety Precautions

---

- 7) Ensure that all control knobs are set to “OFF” position after use.
- 8) If the flame is blown out during gas hob is operating, the safety valve will cut off gas supply. Ignite again at least after one minute.
- 9) Do not use spray or compressed gas when the gas hobs is operating in order to avoid hazard.
- 10) After ignition, check for the flame if it is even and normal. Before removing utensil from the built-in gas hob, turn the control knob to small flame or “OFF” position.
- 11) Do not place any object (e.g. hot mat) between the trivet and the utensil in order to avoid damage to the built-in gas hob.
- 12) Do not use over-size or over-weight utensil. Or it will cause damage to the gas hob. The bottom diameter of the utensil is less than 400 mm and weight is not over 5 kg.
- 13) Do not tilt the utensil. Place the utensils steadily on the trivet.
- 14) Keep children away from the gas hob.
- 15) Keep the original invoice for online registration and future reference for service.
- 16) The information contained in these instructions is essential for the correct operation of the gas hob and more importantly. For your safety, our company is exempt from all responsibility if this the requirements of this manual are not complied with.

# B. Product Structure



## C. Installation Instructions

### Important

- In accordance with the Gas Safety Ordinance of Hong Kong , any gas installation works including the installation of appliances and connecting tubes must be undertaken by registered gas installers who are registered for the appropriate classes and are employed by registered gas contractors.
  - The inlet gas supply working pressure to the gas hob must be 1.5 kPa (HK Towngas).
  - Pressure must be accurately measured before connecting the built-in gas hob.
  - If gas supply with non-compatible pressure are connected to the built-in gas hob. It will affect the performance and/or pose risk of damage to the built-in gas hob.
  - It is essential to ensure that the kitchen is well ventilated since the use of a gas hob will produce heat and moisture. Keep windows opened and/or install ventilation device (e.g. range hood, exhaust fan). Prolonged or intensive use of the gas hob will require for additional ventilation. For example, opening wider windows or increasing the operating level of ventilation device (e.g. range hood, exhaust fan).
  - If the built-in gas hob is required to install close to combustible surroundings (such as wooden walls, wooden shelves), it should be installed at least 60mm (approx. 2.5 inch) from the glass edges to the side walls.
  - In order to keep a good ventilation condition, there should be at least 100mm (approx. 4 inch.) distance from the base bottom of the built-in gas hob.
  - External gas governor is not required for the gas hob.
  - Do not use aluminum cover and other additional fitting. Using aluminum cover may cause abnormal combustion .
  - To set the burners so that no flames spread out next to pots, pans, etc.
  - Diameter of the cookware: Pots : 120-280 mm ; Woks and pans : 160-400 mm
- The burner supporting weight : Max. 5Kg.
- If a sponge strip needs to be installed, it must be provided by the manufacturer to prevent liquid leakage, ensuring normal and safe use.
  - Please contact the service department of the authorized agent for repair and parts replacement. During warranty period, we company, will be reserve the right to charge of spare parts and service fees if the damage is caused by misuse or improper installation.

## C. Installation Instructions

---

### I. Room Ventilation

The kitchen should be well-ventilated and with the amount of no less than 20m<sup>3</sup> air volume for regular gas combustion. The key is air must naturally flow through permanent opening in the walls of the room. The openings must vent the fumes outdoors and those openings must be at least 100cm<sup>2</sup> and it should never be blocked. In strict compliance with any local regulation in force, it is permitted that indirect ventilation by air drawn from an adjacent room.

### II. Gas Connection

#### Important:

According to the Gas Safety Ordinance of Hong Kong, any gas installation works including the installation of appliances and connection tubing, must be undertaken by registered gas installers (RGI) who are registered for that appropriate classes and be employed by registered gas contractors.

Before connecting the appliances, make sure that the the type of gas and working pressure are corresponded to the specifications on the data label affixed to the underside of the gas hob. Gas connection must be complied with the pertinent standards and provisions in force. The size of the gas inlet is 1/2 inch.

Use approved gas tubing bearing **EMSD approval mark** (e.g. **EMSD APPROVAL GTXXXX**) for connection to appliances, or other appropriate methods accepted by EMSD.

**Note:** EMSD stands for Electrical and Mechanical Services Department (HK)

Gas tube shall be no longer than 200cm and kept away from the gas hob and do not crossing through the bottom of the gas hob.

## C. Installation Instructions

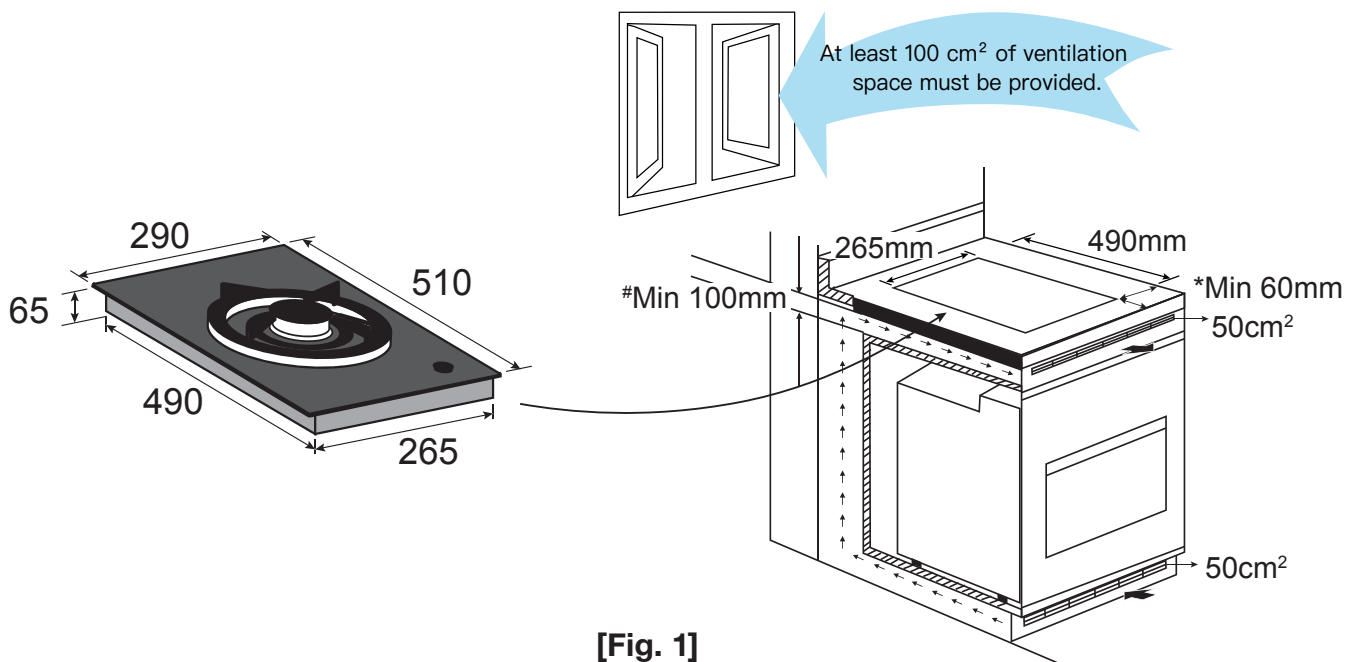
### III. Cut-out Dimensions

Open an installation hole on the worktop of cabinet as per **[Fig. 1]**.

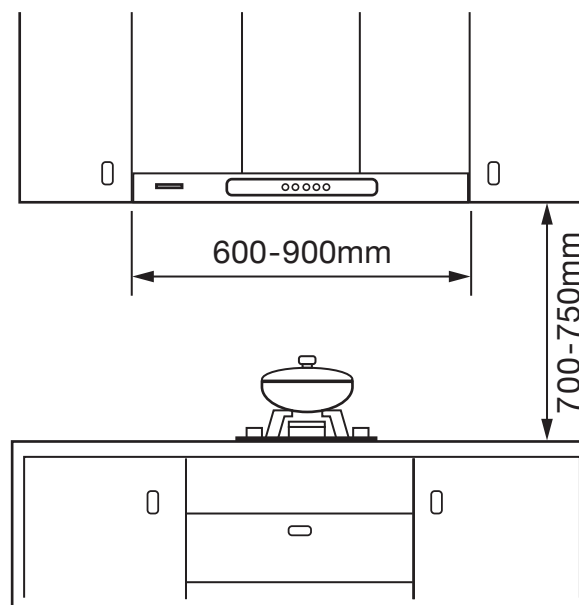
**Note:**

1. # The height under the base tray shall reserve more than 100mm and
2. \* Minimum clearance 60mm from gas edges of hob to wall.

Cut out dimension (unit/mm): (W) 265 x (D) 490



3. Range hood with width of 600-900mm shall be installed on the top of the gas hob and keep a space of over 700-750mm on top of it **[Fig. 2]**.



[Fig. 2]

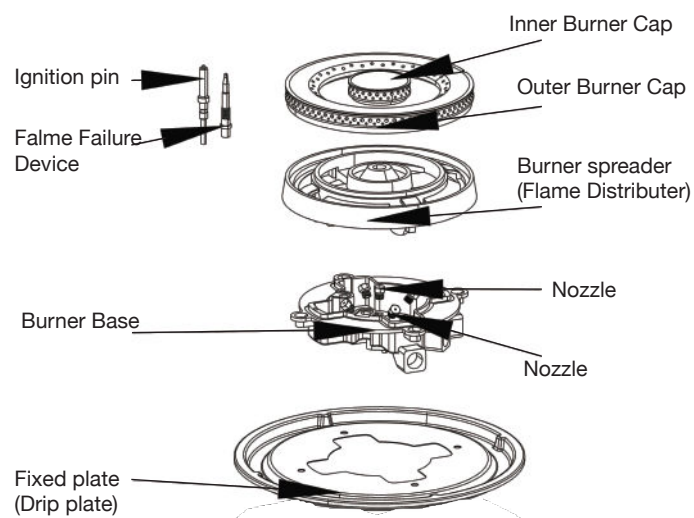


## C. Installation Instructions

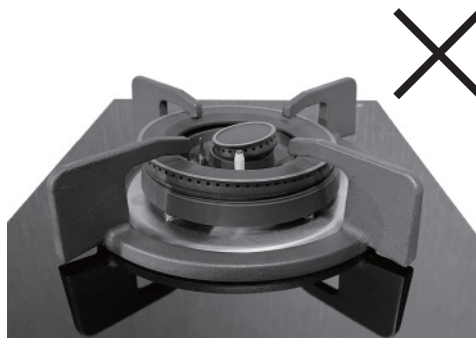
### IV. Correct Position of Burner Ring, Burner Cap and Trivet

Incorrect position of burner ring, cap and trivet will affect the flame performance and cause damage of burner ring and glass panel or other accidents.

- 1) Assemble all components correctly as **[Fig. 3]**.
- 2) Fit the burner ring and burner cap properly with no gap. Do not fit it improperly as **[Fig. 4]**.
- 3) Put the trivet onto the drip plate correctly and the embossed features on the drip plate is used to guide the fitting for the trivet.



**[Fig. 3]**



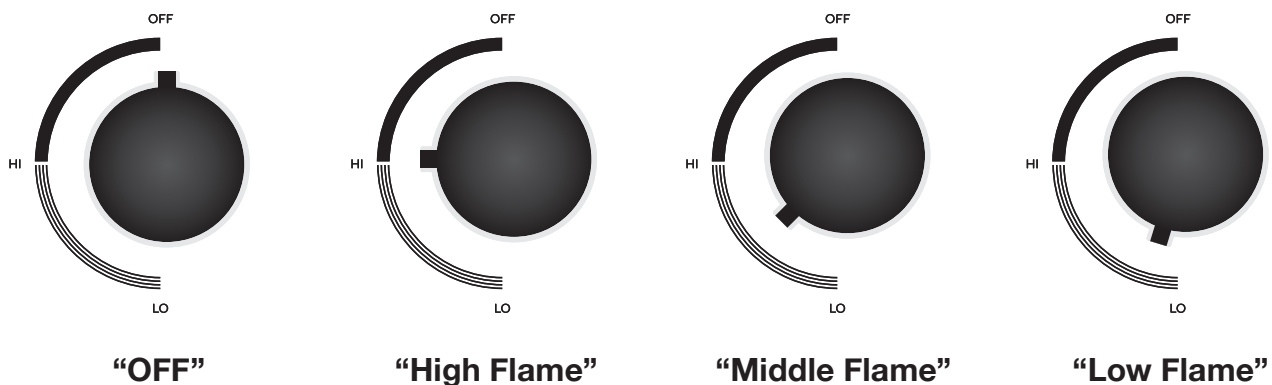
**[Fig. 4]**

## D. Operating Instructions / E. Replacing Battery

---

### D. Operating Instructions

- 1) While pushing the control knob, turn it anti-clockwise slowly (towards the “ HI ” position) until you hear a “**CLICK**” sound. Electronic spark will ignite burners. Keep pushing the control knob for several seconds, the safety device will then operate. If you release your hand halfway, electronic spark will not ignite burners.
- 2) If the flame goes out when you release your hand, repeat the ignition procedure again but try releasing your hand slowly.
- 3) Turn control knob to adjust flame to desirable settings. Flame can be adjusted between “OFF” and “ HI ”. Please adjust flame slowly **[Fig. 5]**.



**[Fig. 5]**

- 4) If the flame is extinguished while using, the safety device will shut the gas off after a short delay. When this appears, please turn the control knob to “ OFF ” position.
- 5) Turn the control knob to “ OFF ” position, the flame will extinguish.

### E. Replacing Battery

When the sound generated from ignition spark becomes deep, or the ignition may light up flame but would be extinguished instantly. Please replace the battery. Remind to set the battery to correct polarity ( “ + ” and “ - ” ).

## F. Daily Maintenance

---

### F. Daily Maintenance

- 1) The top panel of this gas hob is made of ceramic glass which is safer than conventional for this application. It is advised that to follow the safety precautions below before using gas hob with ceramic glass panel in order to prevent the ceramic glass panel from breaking.
- 2) Clean the burner ring, burner cap and trivet regularly to maintain a clear gas and flame passage for the gas hob. Clear and tidy up the burner ring, burner cap and trivet after spillage of food and liquid once the gas hob is cooled down.
- 3) Turn off the gas hob immediately if abnormal noise is generated from the gas hob. Contact gas supply company or gas hob importer (distributor) for inspection.
- 4) Do not use oversize utensils for cooking. It is recommended to use utensil with bottom diameter less than 400mm and weight is not over 5kg.
- 5) Do not hit the ceramic glass panel with hard objects and do not place heavy objects on the ceramic glass panel.
- 6) Do not clean the gas hob (and its components) when it is hot.
- 7) Use soft and wet cloth with mild detergent to clean the ceramic glass panel.
- 8) Use warm water and neutral detergent to clean the burner and its components.

## G. Product Specification

---

<b>Model</b>	<b>V29VNTG</b>
<b>Product Name</b>	<b>Built-in Gas Hob</b>
<b>Dimension</b>	290 (W) x 510 (D) x 65 (H) mm
<b>Cut-out Size</b>	265 (W) x 490 (D) mm
<b>Heat Input</b>	5500W (gas)
<b>Power</b>	1.5V DC battery
<b>Ignition Method</b>	Electronic ignition
<b>Gas Type</b>	Town Gas
<b>Gas Connection</b>	1/2" B.S.P (Male)
<b>Gas Pressure</b>	1500 Pa
<b>Safety Device</b>	Yes
<b>Panel Material</b>	Euro Kera Ceramic Glass (Made in France)
<b>Colour</b>	Black ceramic
<b>Origin</b>	PRC
<b>Weight</b>	3.8 kg

## H. Trouble Shooting

Situation	Reason	Solution
Flame cannot be ignited	1) Ignition pin is wet, especially in the humid season 2) Main gas valves is closed 3) The battery is used up 4) Battery is not installed properly in right position 5) Greasy dirt on ignition pin 6) Greasy dirt on thermocouple 7) Misplacement of ignition needle 8) Burner cap or spreader is placed incorrectly 9) Greasy dirt in the gas passage on the burner cap 10) Ignition pin or igniter has been damaged 11) The thermocouple or electrovalve has damaged	1) Dry the Ignition pin with clean tissue or dry cloth 2) Open the main gas valve 3) Replace battery 4) Re-install battery at correct polarity ( “+” and “-” ) 5) Clean greasy dirt on ignition pin. 6) Clean greasy dirt on thermocouple 7) To contact the supplier to arrange registered gas installers for repair or inspection. 8) Placed them again correctly. 9) To clean and tidy up the burner cap 10) To contact the supplier to arrange registered gas installers for repair or inspection 11) To contact the supplier to arrange registered gas installers for repair or inspection
No main flame	Gas meter cock and/or appliance isolating cock have been closed	Open gas meter cock and/or appliance isolating cock completely
Flame cannot be held	Incorrect turning of control knob	Push down and turn the control knob anti-clockwise towards “Lo” until “CLICK” sound is heard. Release only after the flame is set.
Smell of Gas	1) Gas pipe is damaged or not connected properly 2) Gas valve is leaking	1) Contact the sole agent or registered gas installer (RGI) to replace or re-connect the gas pipe 2) Contact the sole agent or a registered gas installer replace gas valve.
Red flame	High air humidity or too much oil fume	Common phenomena
Yellow or small flame	Grease and dirt accumulated on burner cap (or burner ring)	Wash burner cap (or burner ring) in warm water with mild detergent. Dry the burner cap with a clean cloth and place it back to the correct position on the gas hob.
Lift flame	Too rapid air flow in kitchen or too strong range hood	To close door and window or to turn on the range hood in lower speed
Returned fire	1) Too low gas pressure 2) Spillage of food and liquid into the gas passage on the burner cap 3) The burners in high temperature after a long burning time.	1) To contact the supplier to arrange registered gas installers for repair or inspection 2) To clean and tidy up the burner cap 3) To temporarily stop using it and try again after it cooled down.
Short and small flame	Gas pressure low	To contact the supplier to arrange registered gas installers for repair or inspection
Easily flameout	Thermocouple is deflected from flame	To contact the supplier to arrange registered gas installers for repair or inspection
Unstable flame	The burner cap and burner ring is not installed properly	Re-install the burner cap and burner ring properly
Other problems	Other malfunctions	To contact the supplier to arrange registered gas installers for repair or inspection.

**Warning:** If the gas hob cannot be ignited by the above suggested solution, do not attempt to ignite it by other means. Please contact the sole agent for repairing.

# 目錄

---

一. 注意事項	15
二. 產品結構	16
三. 安裝說明	17
I. 房間內通風環境	17
II. 氣體接駁	17
III. 櫃面開孔尺寸	18
IV. 爐頭環，爐蓋及爐架之正確放置	19
四. 操作說明	20
五. 更換電池	20
六. 日常保養注意事項	21
七. 產品規格	21
八. 常見故障及處理	22
保用條款	23

## 一. 注意事項

多謝閣下選購本公司煮食爐。本說明書將指導用戶如何正確使用本煮食爐 [型號: V29VNTG (適用香港煤氣)] 及瞭解其結構性能特點、主要技術參數、安裝說明、操作步驟及調節方法、安全使用及注意事項、維護與保養、常見故障處理辦法等內容。本煮食爐是一件選料精良設計新穎的產品，配備高效環保節能爐頭、低氮氧化物燃燒器、自動熄火安全保護裝置、智能電子點火、定時熄火及安裝簡便等性能。所有爐具安裝與拆裝、調校和維修服務必需由香港註冊氣體裝置技工來執行，否則一切後果本公司概不負責。

如果您對本煮食爐有任何查詢或需要更多資料，敝公司客戶服務部會提供完善的服務。

### 重要說明

產品使用前，請細閱本使用說明書，並妥善保存，以作將來參考之用。

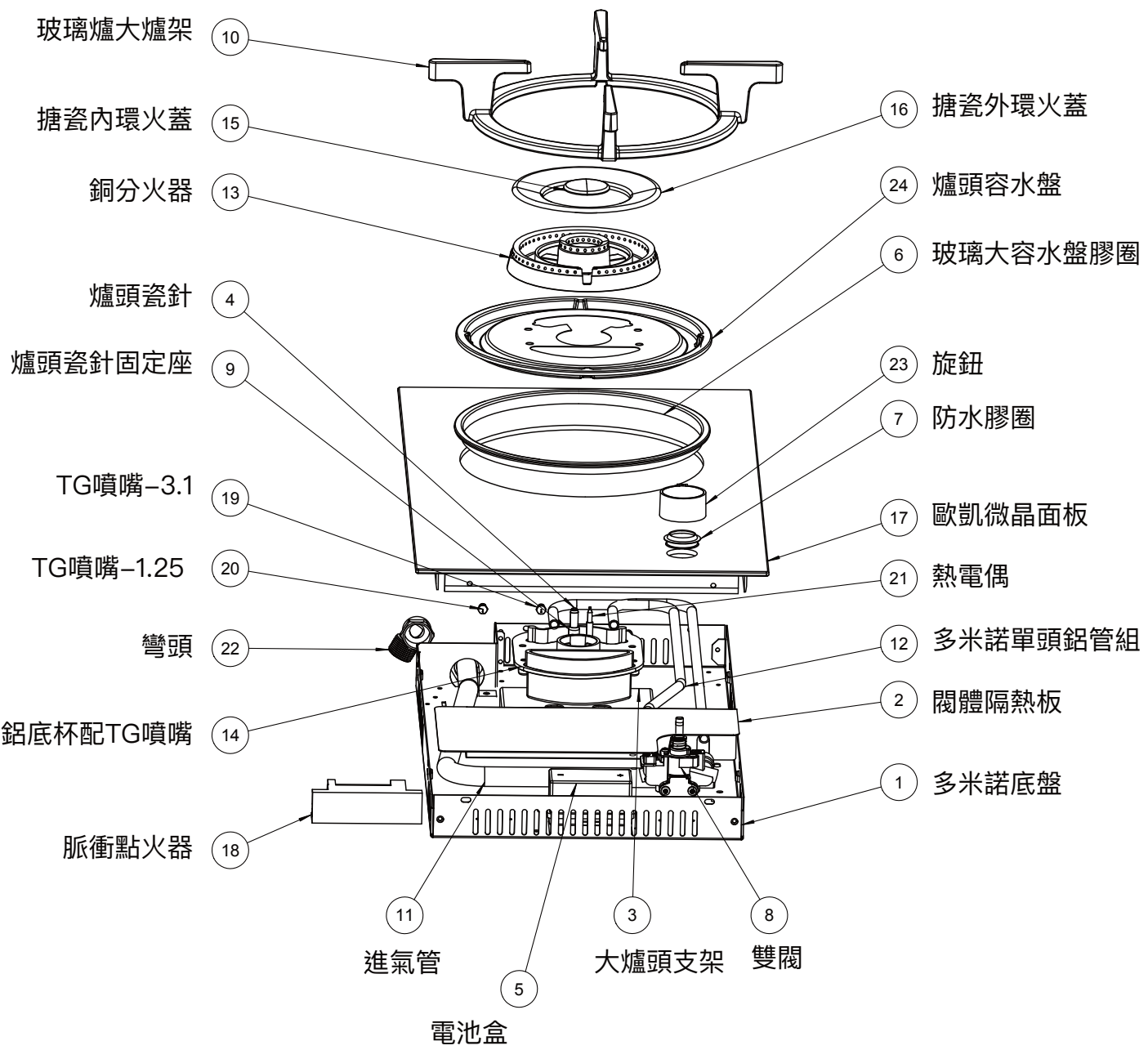
本產品只供一般家居使用，請參閱本說明書的安裝及操作指示。

### 注意！

根據香港氣體安全條例，任何氣體裝置工程，包括爐具和接駁喉管的安裝，必須由註冊氣體裝置技工執行，而該技工已於相關的氣體工程類別註冊及受聘於註冊氣體工程承辦商。

- 1) 本產品必須由註冊氣體裝置技工安裝。
- 2) 請確保本產品使用範圍內通風良好，避免室內缺氧。
- 3) 當在灶櫃面安裝嵌入式氣體煮食爐時，請確保灶櫃設有抽風設備及煮食爐使用時操作正常。
- 4) 切勿將易燃物料，噴霧及壓縮容器放置在灶櫃內。
- 5) 於長時間使用時，應將窗戶打開或啟動抽風設備(例如: 抽油煙機、抽氣扇)，以確保室內空氣流通。
- 6) 如發現漏氣，應立即關閉煮食爐及燃氣來源開關，打開窗戶及通知代理商委派註冊氣體裝置技工進行檢查及維修。切勿開關電源或電燈。
- 7) 煮食爐使用後，應檢查所有旋轉開關旋轉至關閉位置“OFF”。
- 8) 如爐火在使用過程中意外地熄滅，安全閥會自動切斷氣源。於一分鐘後，才可重新點火。
- 9) 使用煮食爐時，切勿使用噴霧劑或壓縮氣體，以免發生危險。
- 10) 點火後，請檢查爐火是否正常。拿走煮食器皿前，請先把爐火調細或關閉。
- 11) 請勿放置任何物件(例如:吸熱墊)放置於爐架與煮食器皿之間，以避免對煮食爐造成嚴重損壞。
- 12) 請勿使用過大或過重的煮食器皿壓於爐架上，以避免對煮食爐造成損壞。  
煮食器皿底部直徑必須在 400 毫米以下及重量不應超過 5 公斤。
- 13) 為避免傾倒煮食器皿，煮食器皿應放置在爐架中央位置。
- 14) 切勿讓兒童靠近煮食爐。
- 15) 購買後，請妥善保存購買發票及網上登記保養，這是公司提供維修服務的重要依據。
- 16) 在使用前請仔細閱讀說明書內所作出對安裝及使用環境的安全說明。如不遵守說明書操作而出現問題，本公司將不負任何責任。

二. 產品結構





## 三. 安裝說明

### 重要說明

- 根據香港氣體安全條例，任何氣體裝置工程，包括爐具和接駁喉管的安裝，必須由註冊氣體裝置技工執行，而該技工已於相關的氣體工程類別註冊及受聘於註冊氣體工程承辦商。
- 爐具的進氣運作氣壓：香港煤氣1.5千帕 (kPa)。
- 安裝本產品前，應量度氣壓才能進行接駁。
- 如接駁的進氣運作氣壓與本產品所標示的不相符，將會嚴重影響本產品運作及導致損壞。
- 使用煮食爐時會產生熱氣及濕氣，所以廚房必須保持空氣流通。可開啟自然風窗口或安裝抽風裝置(例如：抽油煙機、抽氣扇)。長時間持續不斷的使用煮食爐，就必須要設置額外的通風設備(例如：手開窗戶)或使用有效的抽風裝置(例如：抽油煙機、抽氣扇)。
- 如要安裝煮食爐在非易燃物料附近，兩側須距離玻璃面最少60毫米 (2.5英吋) 以上，煮食爐的安裝位置應與周圍非易燃物料保持距離玻璃面最少60毫米以上。
- 煮食爐底部與其下面的平面預留至少100毫米 (4英吋) 的高度距離，以確保有足夠的通風。
- 本產品不需安裝外置氣體穩壓器。
- 切勿使用錫紙碟或非本公司所提供之輔助用具，因為使用錫紙碟可能令致爐火燃燒不正常。
- 煮食時切勿將爐頭火力調至火焰大於廚具器皿的外邊緣。
- 烹飪器皿的直徑：①煲具：120–280毫米(mm)；②鑊與平底鍋：160–400毫米(mm)。
- 爐頭承托重量：最大5公斤(kg)。
- 如需要安裝海綿條，需由生產商提供，以防止液體滲漏，可正常及安全使用。
- 如需維修或更換零件，請與本公司維修部聯絡，並必須使用原廠配件。在保養期內，如因人為損壞、錯誤或不恰當使用爐具而導致之損壞，本公司會收取維修及零件費用。

### I. 房間內通風環境

保持正常氣體燃燒及房間通道所需的空氣量，其體積必須不少於 20 立方米。空氣必須流通於房間內的窗戶或通風口。窗戶或通風口的面積必須最少為 100 平方厘米，並確保不被阻塞。在符合通風系統的有關法例之下，可接受從隔鄰房間抽取空氣的間接通風系統。

### II、氣體接駁

**注意：**根據香港氣體安全條例，任何氣體裝置工程，包括爐具和接駁喉管的安裝，必須由註冊氣體裝置技工執行，而該技工必須已於相關的氣體工程類別註冊及受聘於註冊氣體工程承辦商。安裝前先查閱煮食爐的底部標籤上所列出的規格是否符合與安裝地點的氣體類別及操作壓力。氣體接駁必須符合有關法例。入氣咀的直徑為 1/2 吋。使用認可印有機電工程署批准標記(例如：機電工程署批准 EMSD APPROVAL GTXXXX) 的氣體接駁喉管以連接爐具，或使用機電工程署接納的其他恰當方法。

### 三. 安裝說明

使用煤氣之接駁喉管不能長於200cm，喉管不得觸及爐體，亦不得從爐具底部穿過，以免喉管受熱，容易發生意外。

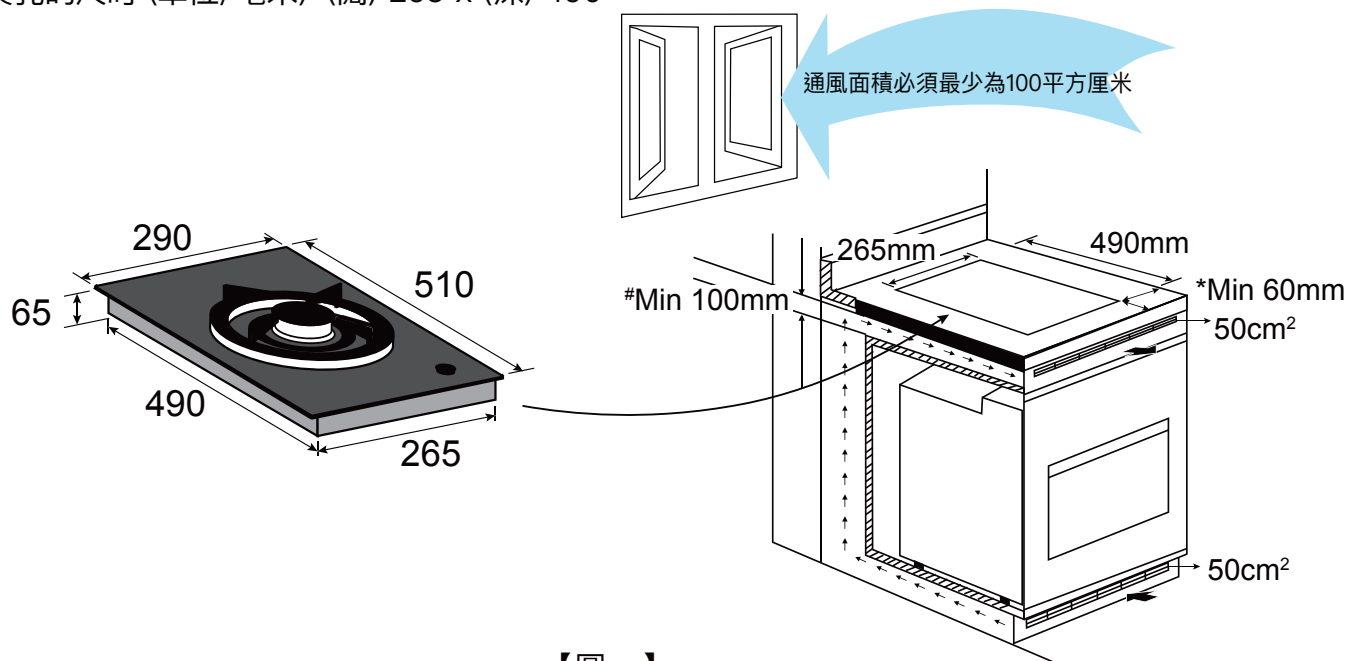
#### III. 櫃面開孔尺寸

在安裝煮食爐的廚櫃枱上按照【圖一】尺寸開設安裝孔。

注意：

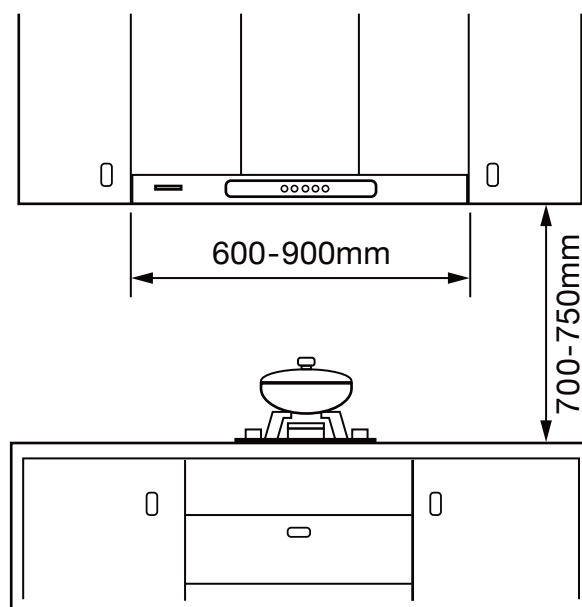
1. # 煮食爐底盤下需預留最少100毫米(mm) 高度距離 及
2. \* 由玻璃面至牆身最少預留60毫米(mm) 的空間距離。

安裝孔的尺寸 (單位/毫米): (闊) 265 x (深) 490



【圖一】

3. 爐具上方宜安裝600–900mm闊的抽油煙機，且頂部應留有700–750mm以上的空間【圖二】



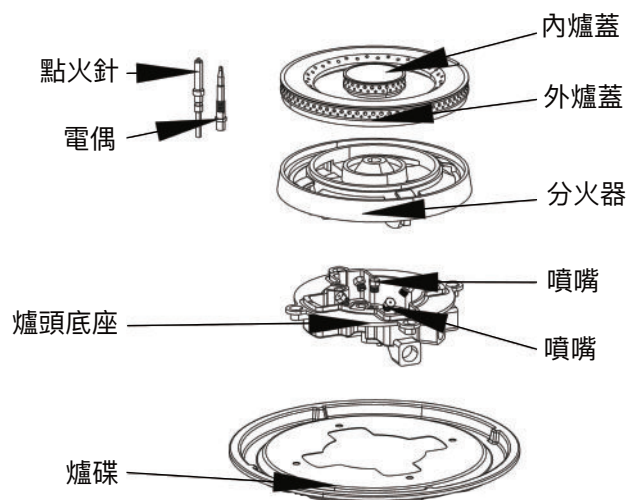
【圖二】

### 三. 安裝說明

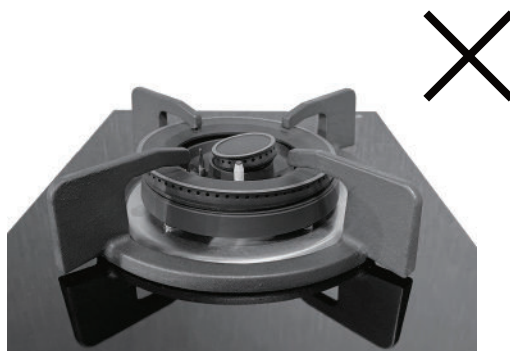
#### IV、內爐頭環、外爐頭環及爐架之正確放置

在內爐頭環、外爐頭環及爐架不正確地放置的情況下，可能會引起燃燒不良，爐頭環/玻璃面板損壞或其他意外。

- 1) 將爐頭配件正確地放置，如【圖三】。
- 2) 內爐頭環必須正確放置，切勿傾斜如【圖四】。
- 3) 爐架按爐碟上對應的凹凸位置擺放，以確保爐架擺放在正確的位置。



【圖三】

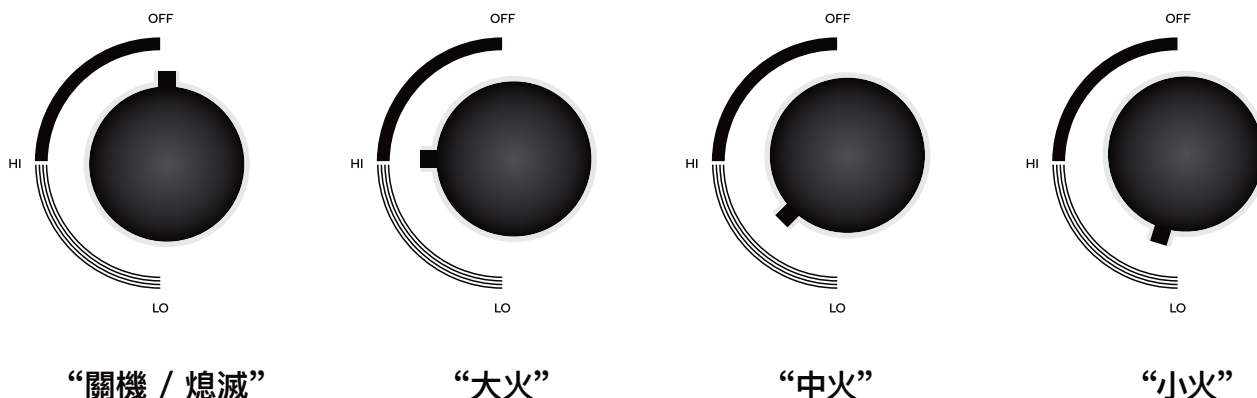


【圖四】

## 四. 操作說明 / 五. 更換電池

### 四. 操作說明

- 1) 向下按壓煮食爐開關旋鈕並同時向逆時針方向(“ HI ” 的位置)慢慢地旋轉, 隨著「啪啪」的聲響, 火花將點燃燃燒器。在確認燃燒器被點燃後(數秒內), 請保持原有位置並可以放手。若燃燒器未被點燃時而中途放手, 可能會未能點火。
- 2) 將手放開煮食爐開關旋鈕而發現爐火仍未點著時, 請用以上的點燃方法再次操作。點火後, 切記將手慢慢地放開。
- 3) 轉動煮食爐開關旋鈕, 調節爐火至所需火力。爐火大小可於 “ OFF ” 及 “ HI ” 之間的位置調節。請緩慢轉動開關旋鈕以調節火力【圖五】。



【圖五】

- 4) 如爐火熄滅, 防漏熄火安全裝置會自動切斷燃氣供應, 如出現有此情況, 請將煮食爐開關旋鈕轉至 “ OFF ” 的位置。
- 5) 將煮食爐開關旋鈕轉至 “ OFF ” 的位置, 爐火便會熄滅。

### 五. 更換電池

如遇點火(啪啪)聲音變得低沉或燃燒器點燃後立即熄滅, 可能電池沒有電。在這個時候, 需要更換電池。在更換電池的過程中, 請把電池的 “ + ” 、 “ - ” (正極、負極) 接駁至電池盒的正確位置。

## 六. 日常保養注意事項 / 七. 產品規格

### 六. 日常保養注意事項

- 1) 此煮食爐的面板是瓷化玻璃製造，較一般玻璃安全。唯使用瓷化玻璃面板的煮食爐時須注意以下事項，以避免損壞玻璃面板。
- 2) 經常清潔爐頭組件以確保火力暢順，如滾瀉食物汁液或液體，應在爐頭組件冷卻後儘快進行清理。
- 3) 如煮食爐發出不尋常聲音，應立即停止使用並安排氣體供應公司或爐具進口商進行檢查。
- 4) 切勿使用過大的器皿煮食，煮食器皿底部直徑必須在400毫米以下及重量不應超過5公斤。
- 5) 切勿以硬物撞擊或將重物放置於瓷化玻璃面板上。
- 6) 當爐具尚未冷卻時，請切勿進行清洗。
- 7) 應使用柔軟的濕布及中性清潔劑輕抹面板部份。
- 8) 使用暖水及中性清潔劑清潔爐頭。
- 9) 爐碟最好用暖水清洗，暖水內不能有磨砂粉末或腐蝕性物質，這些成分會損壞爐碟表面。
- 10) 爐具要經常小心清洗點火針及熱電偶，並確保爐頭蓋的焰孔暢通。切勿使用電油及其它可燃性物質來清潔爐具，否則有可能會引起火警等危險。

### 七. 產品規格

產品型號	V29VNTG
產品名稱	嵌入式氣體煮食爐
產品尺寸	290 (W) x 510 (D) x 65 (H) mm
開孔尺寸	265 (W) x 490 (D) mm
額定熱負荷	5500W
電源供應	DC 1.5V (D 型乾電池 1 粒)
點火方式	脈衝點火器
氣體種類	香港煤氣
氣體接駁方式	1/2" B.S.P (公頭)
氣體壓力	1500 Pa
安全裝置	有
面板物料	Euro Kera 瓷化玻璃 (法國製造)
瓷化玻璃顏色	黑色
產地	中國
重量	3.8 kg

## 八. 常見故障及處理

問題	可能原因	解決方式
爐頭點不著火	1. 點火器潮濕 (尤其在潮濕季節) 2. 氣體來源開關已關閉 3. 電池已耗盡 4. 電池未裝好 5. 點火針油垢多 6. (熱)電偶油垢多 7. 點火針位置不當 8. 爐頭火蓋或燃燒器擺位不正 9. 爐頭火蓋的焰孔有污物 10. 點火針或點火器損壞 11. (熱)電偶或電子磁吸損壞	1. 用紙巾或乾布抹乾點火器 2. 檢查及打開氣體來源開關 3. 更換電池 4. 檢查電池的“正極”和“負極”是否安裝正確 5. 清潔點火針油垢 6. 清潔熱電偶油垢 7. 通知爐具供應商安排註冊氣體裝置技工維修或檢查 8. 重新擺置爐頭火蓋或燃燒器 9. 清潔爐頭火蓋焰孔內之污物 10. 通知爐具供應商安排註冊氣體裝置技工維修或檢查 11. 通知爐具供應商安排註冊氣體裝置技工維修或檢查
爐頭沒有火焰	已關閉燃氣表控制閥及/或爐具切斷閥	完全開啟燃氣表控制閥及/或爐具切斷閥
爐頭不能保持火焰	不正確轉動開關旋鈕	向下按壓開關旋鈕並同時轉至“LO”位置，期間會聽到“啪啪”聲。在爐火點燃後，可以放手。
發現有氣體異味	1. 喉管破裂或未完成接駁 2. 閥體漏氣	1. 聯絡代理商或註冊氣體裝置技工更換或重新接駁喉管 2. 聯絡代理商或註冊氣體裝置技工更換閥體
紅火	空氣濕度大，油煙大	正常現象
黃火或點火	爐頭積聚油漬及污垢	以暖水和稀釋中性清潔劑清洗爐頭，然後抹乾並安裝至正確位置。
離焰/脫火	廚房空氣流動太快，抽風過猛。	適當關小門窗，油煙機打開弱檔。
回火	1. 燃氣壓力過低 2. 爐頭火蓋的焰孔有滾瀉食物及汁液 3. 燃燒時間過長，導致爐頭溫度過高	1. 通知爐具供應商安排註冊氣體裝置技工維修或檢查 2. 清潔爐頭火蓋 3. 暫停使用，待冷卻後再用
火焰短小	燃氣壓力低	通知爐具供應商安排註冊氣體裝置技工維修或檢查
火焰易熄	熱電偶偏離火焰	通知爐具供應商安排註冊氣體裝置技工維修或檢查
火焰不穩定	爐頭未正確裝置	重新裝置爐頭
其他原因	其他故障	通知爐具供應商安排註冊氣體裝置技工維修或檢查

**警告：** 如按以上方法仍無法點火，請即致電代理商作維修服務。切勿使用其他方法點火。